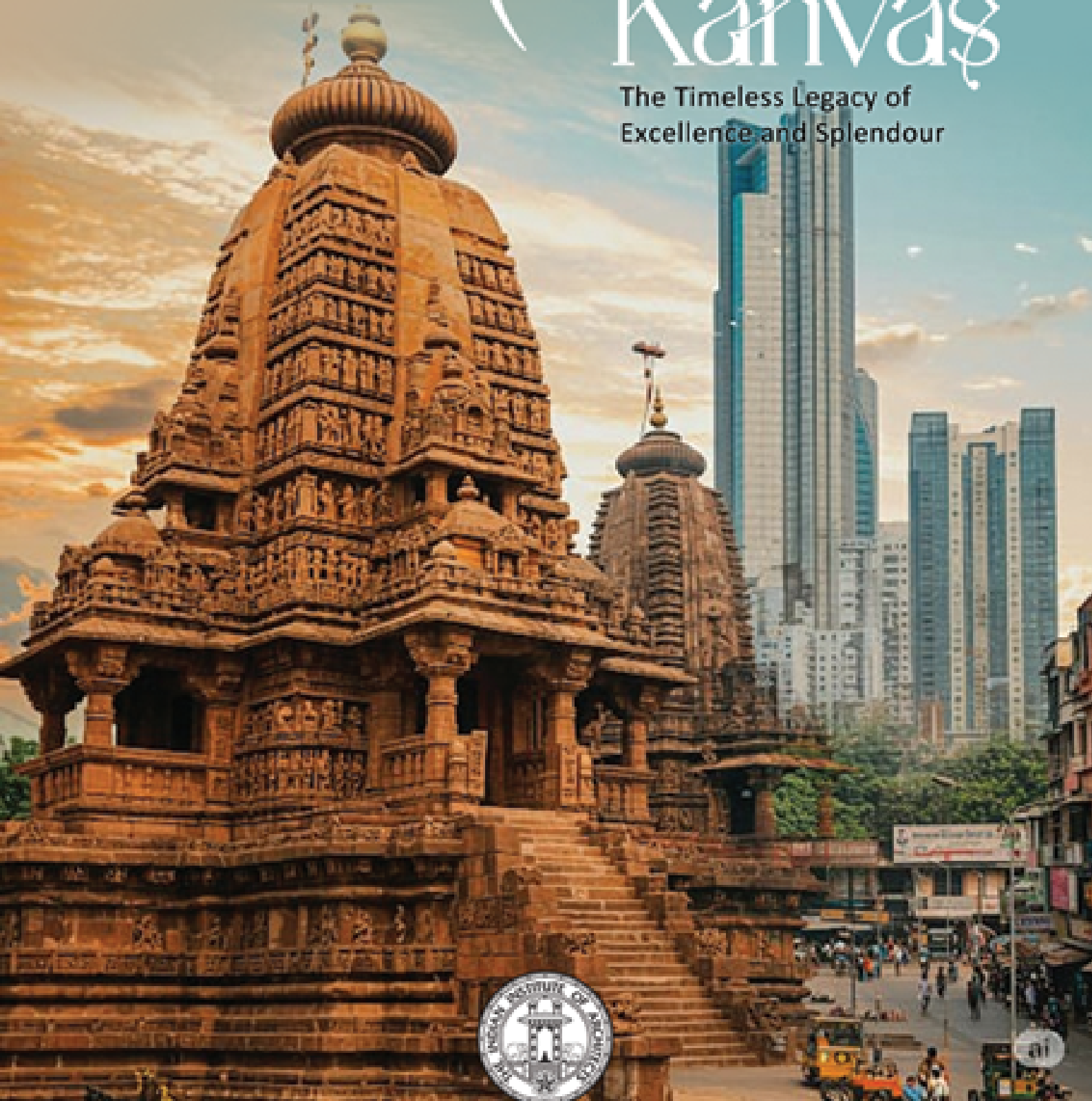


# Kalinga Kanvas

The Timeless Legacy of  
Excellence and Splendour



# THE editorial Team



**Prof. Dr. Bharati Mahapatra**  
Chief Editor, Kalinga Kanvas



**Dr. Prof. Deepashree Choudhury**  
Editor, Kalinga Kanvas



**Ar. Smaranika Satapathy**  
Co - Editor,  
Kalinga Kanvas



**Ar. Shiva Prasad Rath**  
Co - Editor,  
Kalinga Kanvas

# TABLE OF CONTENTS

1. CHAIRPERSON'S MESSAGE
2. CHIEF EDITOR'S MESSAGE
3. FORWARD
4. CHAPTER ACTIVITIES
5. THE SCHOLAR'S CHOICE
  - (i) Alternative Nature-Based Solution for Stormwater Management: Proposal for Sundargarh Town  
by **Dr. Bharati Mohapatra**  
Veer Surendra Sai University of Technology, Burla
  - (ii) Monuments of Power, Shadows of the People :  
Urban Development and the Forgotten Proletariat  
by **Dr. Deepashree Choudhury**  
Professor, School of architecture and Planning,  
Apeejay Institute of Technology, Greater Noida
  - (iii) Femina Naturae :  
Celebrating the Feminine in Nature Through Art  
by **Ar. Sanghamitra Rath**  
IIA Odisha Chapter
6. I WALK, I LOOK, I SEE, I STOP, I PHOTOGRAPH
  - (i) **Ar. Shiva Prasad Rath**
  - (ii) **Ar. Suvaj Mohanty**
7. FINE LINES  
**Ar. Anshuman Mishra**
8. ARCHITECT'S WORK  
**Artifex ( design studio )**

## CHAIRPERSON'S MESSAGE



**Ar. Swopnadutta Mohanty**  
Chairperson,  
The IIA Odisha Chapter

Dear Esteemed Members,

Warm greetings to all!

It is with great pride and joy that we present this special edition of Kalinga Kanvas, which captures the energy, achievements and camaraderie of the IIA Odisha Chapter over the past quarter. This issue is a vibrant reflection of our collective spirit and impactful presence, that we continue to establish within and beyond the state.

From our enthusiastic participation in national and regional events - where the Odisha Chapter shone with distinction - to the joyous celebration of Republic Day, our Annual Chapter Picnic, and International Women's Day, every moment has been a testimony to our unity, purpose and shared passion for architecture. These occasions not only strengthen bonds among our members but also reinforce the cultural and social fabric of our community.

Equally significant are the knowledge-sharing sessions that continue to nurture intellectual growth and professional excellence among our members. I firmly believe that such initiatives empower us to evolve, innovate and lead with deeper insight and responsibility.

I extend heartfelt thanks to each member, contributor and the editorial team for your unwavering dedication and enthusiasm. May Kalinga Kanvas remain a canvas that showcases our journey, inspires our future, and celebrates the essence of being an architect.

With warm regards and best wishes,

**Ar. Swopnadutta Mohanty**  
Chairperson,  
The IIA Odisha Chapter

## CHIEF EDITOR'S MESSAGE



**Prof. Dr. Bharati Mahapatra**  
Chief Editor, Kalinga Kanvas

It gives immense satisfaction and a sense of accomplishment for professionals to see their thoughts, ideas, and work reach a wider audience through publication. It is a medium of expression that strengthens the collective voice of a community. The Indian Institute of Architects (IIA), Odisha Chapter, has long recognised the importance of this platform, promoting a vibrant space for its members to express their creativity, opinions, research, and experiences.

Kalinga Kanvas, the quarterly publication of the Odisha Chapter, has emerged as a testimony to this mission. With every edition, the editorial team has showcased unwavering dedication, curating meaningful and engaging content that reflects the depth and diversity of architectural thought in the region. Their consistent efforts have not gone unnoticed, securing the Runners-Up position for Best Newsletter/Magazine in the IIA awards for 2024–25 is both a proud moment and a well-earned recognition.

This achievement is not just a feather in the cap, but a celebration of the spirit of collaboration and creativity of the entire chapter. It is noteworthy to acknowledge and appreciate the contributions of IIA members and passion of the editorial team who have lent their time and talent in making Kalinga Kanvas a publication of quality. Let us continue to be enriched with the power of shared knowledge, and the value of nurturing a literary culture within the architectural community thrive to flourish for years to come.

Warm regards,

**Prof. Dr. Bharati Mahapatra**  
Chief Editor, Kalinga Kanvas



**Dr. Prof. Deepashree Choudhury**  
Editor, Kalinga Kanvas

It gives me immense joy to introduce this edition of *Kalinga Kanvas*, where each page resonates with the rhythm of Odisha's rich legacy and its seamless dialogue with modern innovation. This issue is a collective voice of our academic and creative community, brought to life through contributions that celebrate design, thought, and transformation. It is not merely a collection of words and visuals; it is a canvas that brings together expressions, explorations, and experiences from across disciplines, offering readers an insight into the dynamic pulse of our institution.

Each page reflects the dedication of our contributors, who have poured their thoughts, creativity, and convictions into every article, sketch, and photograph. From thought-provoking essays and design innovations to artistic renderings and cultural reflections, this edition celebrates both the imaginative mind and the critical thinker. The theme of this issue, *Odisha's Legacy Combined with Modern Innovation*, emerges vividly throughout: it speaks in sketches of temple architecture reimagined in contemporary forms and echoes in essays that blend socio-cultural history with fresh perspectives.

A deeply reflective addition is "Femina Naturae: Celebrating the Feminine in Nature Through Art" by Ar. Sanghamitra Rath. Her poetic and philosophical exploration of the feminine spirit in nature brings a unique perspective rooted in Odisha's cultural sensibilities. Also featured is Dr. Deepashree Choudhury's incisive essay "Monuments of Power, Shadows of the People," which challenges dominant paradigms of urban development. Her analysis of Girgaon and Central Vista reminds us of the often-erased narratives of the working class and the urgent need for inclusive spatial planning.

Equally compelling is Dr. Bharati Mohapatra's article, "Alternative Nature-Based Solution for Stormwater Management: Proposal for Sundargarh Town." In a time when cities grapple with ecological degradation and infrastructural strain, this

piece offers a timely and visionary perspective. Drawing from the ecological wisdom of Odisha and contemporary urban-planning practices, Dr. Mohapatra proposes blue-green infrastructure as a sustainable alternative to conventional stormwater systems. Her work reminds us that the path to resilience lies in working with nature, not against it - a message deeply aligned with this edition's theme of legacy merging with innovation.

Our Chapter Activities segment captures the vibrant life of our institution, marking important celebrations, competitions, and academic milestones - each reflecting our collective ethos of camaraderie, shared learning, and growth beyond the studio walls. The Project Section showcases studio works that marry contextual relevance with progressive design: from community-responsive layouts to contemporary architectural language, these projects underscore our students' capacity to innovate with sensitivity.

I extend my heartfelt appreciation to every contributor whose voice and vision have added meaning to this edition. My sincere thanks go to the editorial team for their tireless effort, attention to detail, and passion for curating a platform that not only documents but also inspires. It is my hope that this issue will spark conversations, provoke thought, and encourage many more voices to be heard in the editions to come.

*Kalinga Kanvas* is not just a magazine, it is a movement to preserve, reinterpret, and celebrate who we are and what we can become. Each contribution is a thread in a larger tapestry of heritage, change, creativity, and continuity. May this edition serve as both a testimony to our shared legacy and a beacon toward our collective future.

**Dr. Prof. Deepashree Choudhury**  
Editor, Kalinga Kanvas

---

# CHAPTER ACTIVITIES



**ERC (East Region Conference)  
Participation on  
20th & 21st December 2024  
at Ranchi, Jharkhand.**

# CHAPTER ACTIVITIES



**IIAPL-14 Participation  
from 16th to 19th January 2025  
at Raipur, Chhattisgarh.**



**Republic Day Celebration  
on 26th January 2025  
at IIA, Odisha Chapter Office,  
Bhubaneswar**



**Picnic Party  
on 26th January 2025  
at Samundra Resier, Brahmagiri, Puri**



# CHAPTER ACTIVITIES

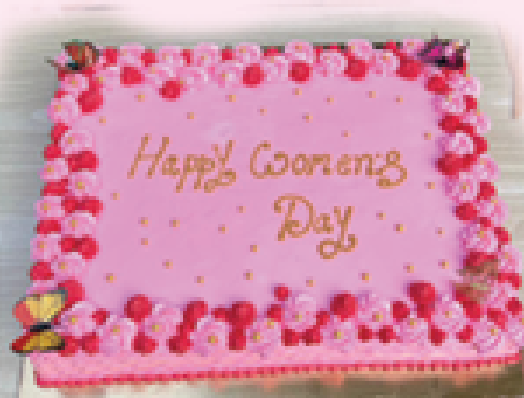
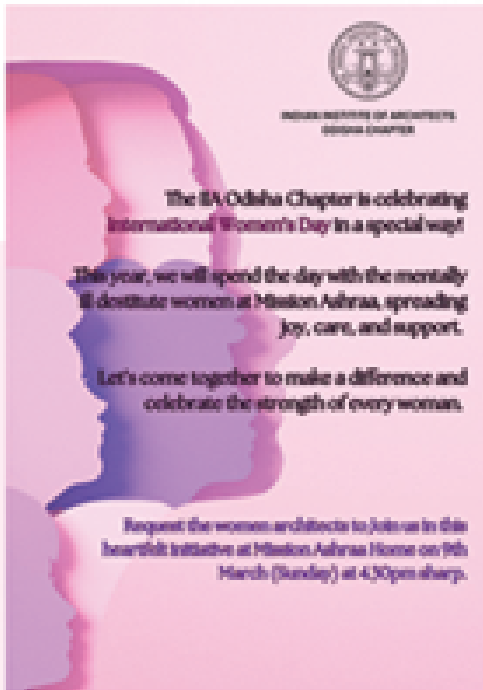
***The Executive Committee represented the fraternity regarding the serious issues of the Online approval system faced by the architects of the entire state to H&UD Secretary Govt of Odisha – 21st Feb 2025***



***“Designing the connected home”  
By Smart Node On 07th March 2025***

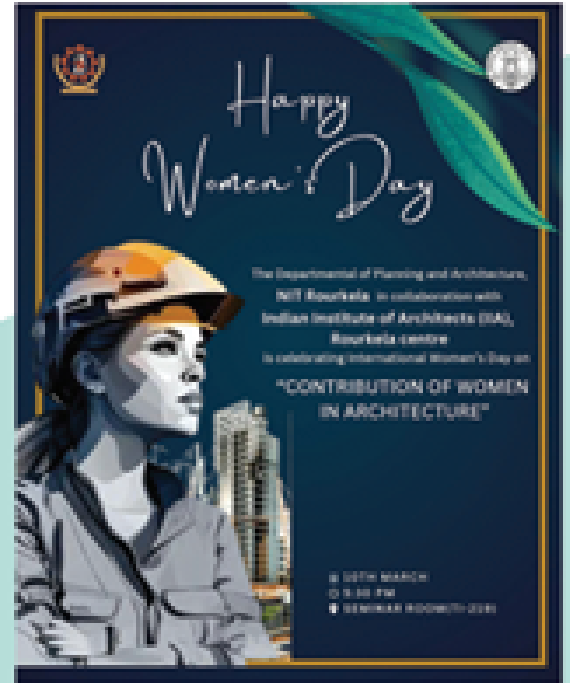


**International Women's Day  
with the mentally ill destitute women at  
Mission Ashraa.  
On 09th March 2025**

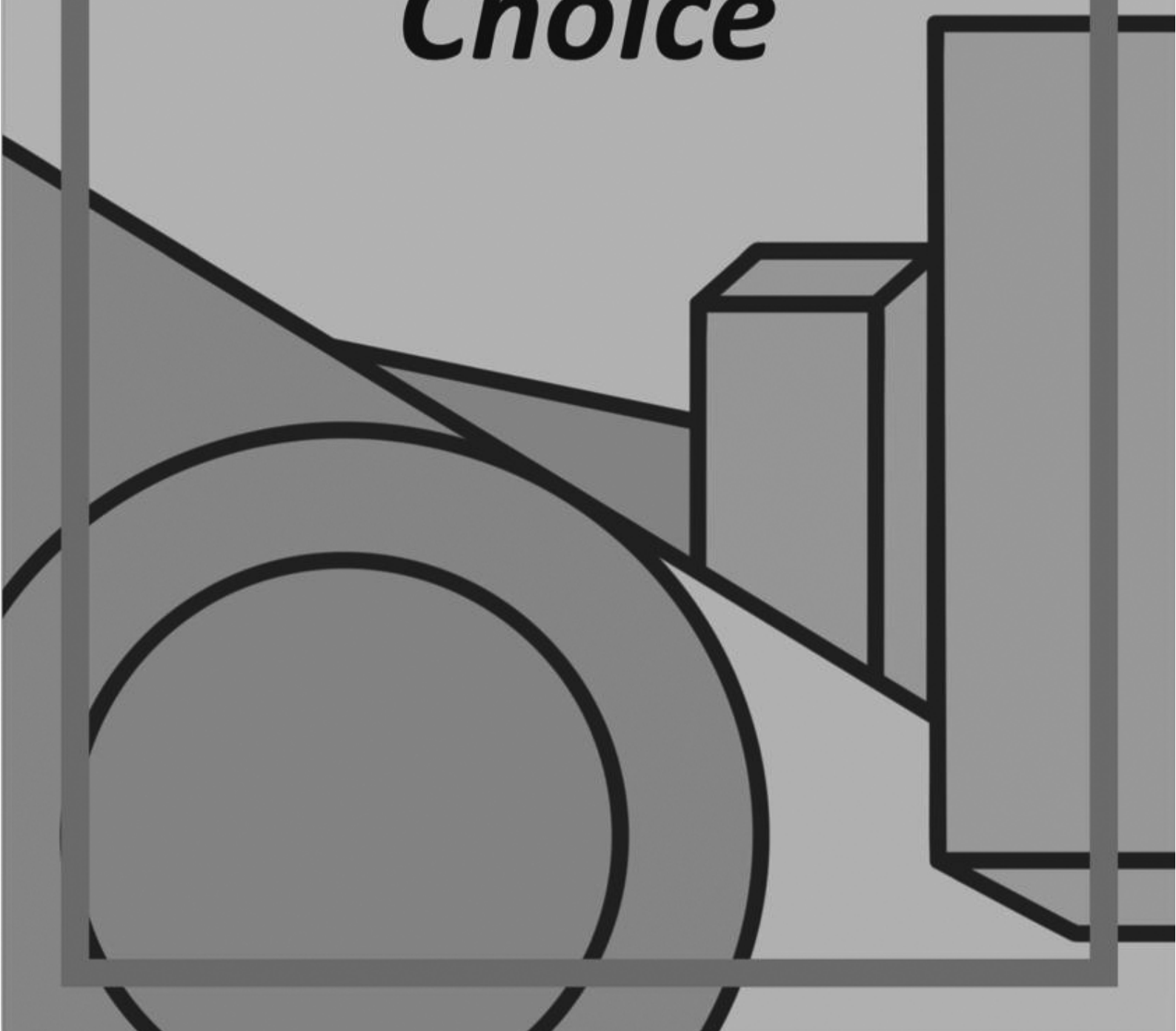


# CHAPTER ACTIVITIES

**IIA Rourkela Centre in association with  
NIT Rourkela celebrates International Women's Day  
on "Contribution of Women in Architecture"  
On 10th March 2025**



***The  
Scholar's  
Choice***



# Alternative Nature-Based Solution for Stormwater Management: Proposal for Sundargarh Town

**Dr. Bharati Mohapatra**

Veer Surendra Sai University of Technology, Burla

## Introduction

Increased urban stormwater events poses problems of urban flooding and threat to urban infrastructure, urban economy and ecosystem, when not planned and managed properly. Urban stormwater management is a tool to control rate of flow and runoff. Managing stormwater needs to start with an understanding of quantity and quality aspects of the water that will be anticipated for an urban area.

Strategies to handle storm water volumes and pollution are getting more and more important due the climate change incidents and urbanization. Provision of effective urban drainage is challenging for the Urban Local Bodies in towns and cities. Potential solutions can benefit to improve the waste water quality discharged to natural surface water course and help to maintain the river ecology. Modern methods can handle large flows of water and waste, treating more material with less time on less space than natural methods.

With this overview, stormwater assessment and investigation of waste water quality of Sundargarh municipal area discharged to the IB river is taken up along with mapping exiting land use, landcover and status of waterbodies in the town. Hydrological study, catchment wise analysis, stream flow maps, analysis of drainage pattern are undertaken and Digital Elevation Model (DEM) of Sunderg-arh town is generated for slope and flow analysis. Current conventional urban drainage system which is a combined sanitary sewer system, was built to manage stormwater to prevent urban flooding and dispose municipal sewage to the Ib river flowing along the Sundargarh town. The networks contain numerous elements, including natural open channels, catch basins, road-drainage systems, curbs, gutters and ditches. The main idea of drainage design has been that stormwater is a waste product and must be removed as quickly as possible away from the source and into

---

the adjacent river. These systems were installed without considering water quality aspects. As this conventional approach focuses primarily on managing the disposal of stormwater and sewer water it will do very little to achieve sustainable development goals.

## **Sustainable Urban Drainage Solutions**

In developed areas, impervious surfaces such as pavement and roofs prevent precipitation from naturally soaking into the ground. Instead, water runs rapidly into storm drains, sewer systems and drainage ditches and can cause:

- Downstream flooding
- Stream bank erosion
- Habitat destruction
- Combined storm and sanitary sewer system overflows
- Reduced stream flows to extremely low levels for extended periods
- Watershed drains quickly
- Conventional drainage system needs to have enough design capacity for carrying increased stormwater volumes caused by extensive urbanization and climate change impacts.

Stormwater management should aim at both flood control and pollution control. This new urban stormwater management approach provides methods that allow source control to handle the quality and quantity of the runoff at local level or nearby the source (decentralized technologies). These methods to stormwater management represent a diverse range of control procedures, which integrate stormwater quality and quantity control as well as enabling social and amenity perspectives to be incorporated into stormwater management approaches.

Strategies should promote investment and solutions that incorporate management of 'natural infrastructure', that is the ecosystem services provided by healthy watersheds. Generally, there are two approaches of stormwater management.

1. Conventional stormwater management systems – Involves Grey Infrastructure
2. Sustainable urban drainage methods – Adopts Green Infrastructural techniques

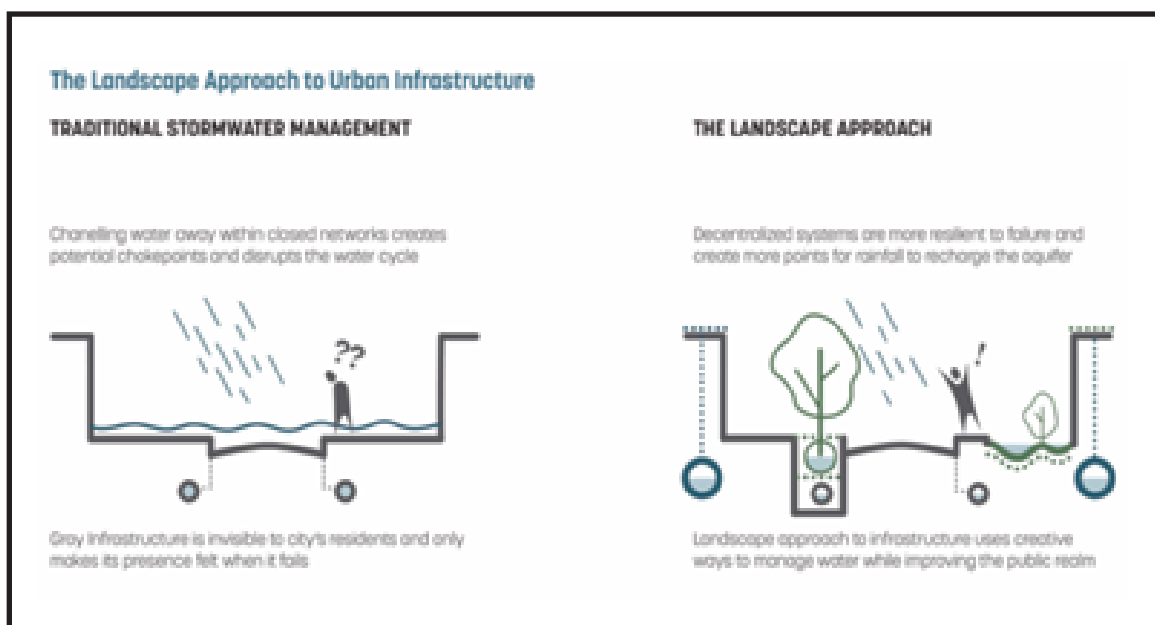
Sustainable techniques are designed to maximize stormwater reduction and provide flow rate control. Also, the goals of this modern storm-water management design, is typically to preserve groundwater, prevent

---

geomorphic changes in waterways, prevent flooding risks, protect water quality, maintain aquatic life and biodiversity value of water bodies and create public realm. These sustainable concepts relate to three core benefits:

- A more 'natural' water cycle
- Water resource efficiency
- Reuse.

Open green storm water management systems, including sunk parks, trees, rain gardens, open canals, permeable surfaces and green roofs can reduce and manage flooding and – at the same time – they can limit heat stress as well as provide recreational spaces for different societal groups. The concept landscape approach to urban drainage as shown in Figure 1. can help to provide these benefits. This in turn can secure improved health outcomes and can eventually reduce health costs for society. Green Infrastructure encompasses a variety of water management practices, such as roadside plantings, absorbent gardens, and other measures that capture, filter, and reduce stormwater. In doing so, it cuts down on the amount of flooding and reduces the polluted runoff that reaches sewers, streams, and rivers. Green infrastructure captures the rain where it falls. It mimics natural hydrological processes and uses natural elements such as soil and plants to turn rainfall into a resource instead of a waste. It also increases the quality and quantity of local water supplies and provides myriad other environmental, economic, and health benefits.

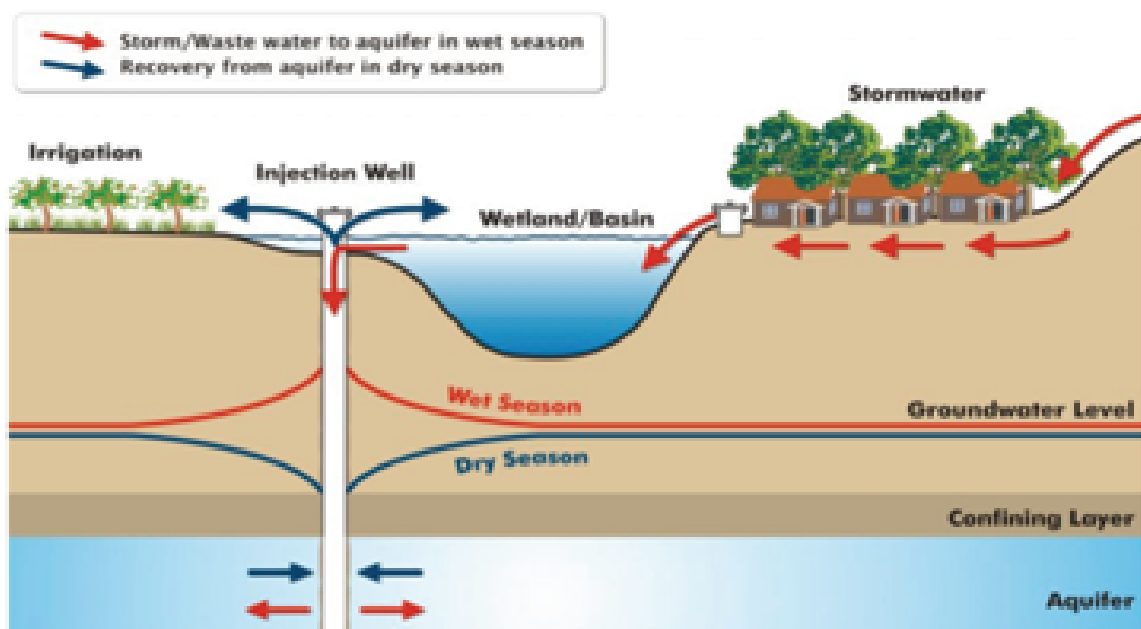


**Figure 1. The Landscape approach to Urban Infrastructure**

## Aquifer storage and recovery - WATER REUSE

Aquifer storage and recovery (ASR) aims to enhance water recharge to underground aquifers through gravity feed or pumping. It can be an alternative to large surface storages with water being pumped up again from below the surface in dry periods. Potential water sources for an ASR system can be stormwater or treated wastewater (Figure 2.).

The possible aquifer types suitable for an ASR system include fractured unconfined rock and confined sand and gravel. Detailed geological investigations are necessary to establish the feasibility of an ASR scheme. The design process should consider the protection of groundwater quality, and recovered water quality for its intended use.



**Figure 2. Cross section and functional mechanism of an aquifer**

## Outline of Sundargarh Municipal Area

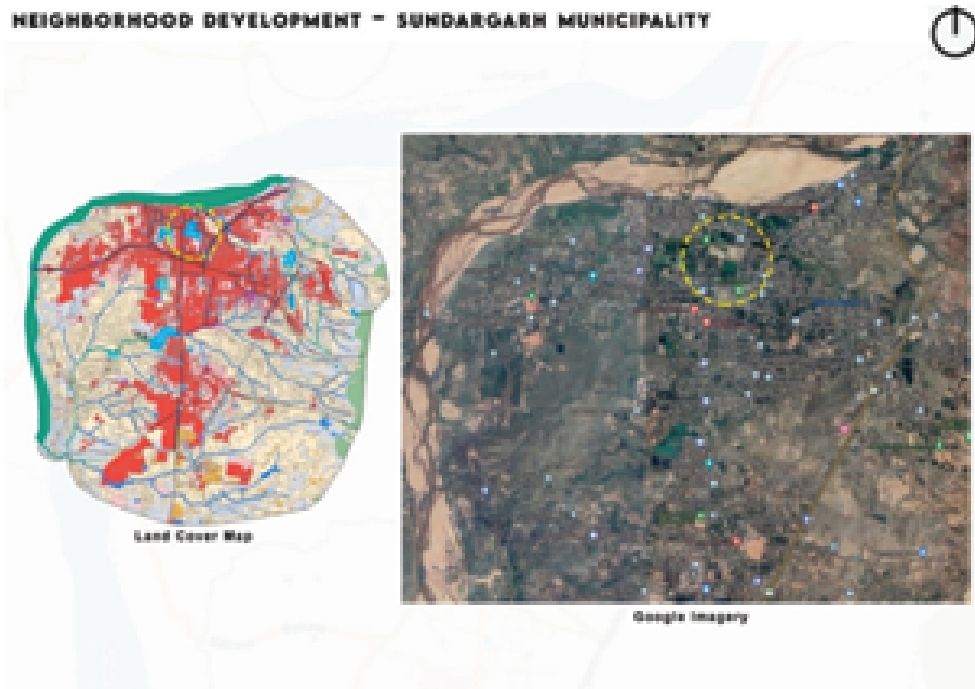
Sundargarh town is situated in the industrial belt of Sundergarh district in Odisha. The growth and development of Sundargarh town is influenced by large scale industrial activities around it. With a population of 45, 036 as per 2011 census the total geographical area of Sundargarh municipality is 24 sq. km. Population density of the city is 1890 persons per sq. km. The various land use/land cover classes identified within and in the periphery area of Sundargarh includes Agricultural land, Urban habitation, Water body, Plantation, Waste land and River /Water bodies etc. Rapid development is taking place in the area with respect to setting up industries and commercial centres, educational institutions and trading activities. Hence, lot of demand

has been generated for residential land use in the area and degraded waste agricultural land near the roadsides are being converted to residential areas.

Sundargarh experiences sub-tropical climate characterized by hot and dry summer, cold winter and erratic rainfall in monsoon. Normal rainfall of the district is approximately 1230 mm/year, Monsoon Months: June – September, Maximum hourly rainfall = 50 mm/hr. But there is a deviation in receipt of rainfall pattern, which is likely to influence the quality of surface drain water to be discharged into the IB river. The entire rainfall is received over a period of 27 days, 80% of which falls in the period between July to September. Purification and Run-Off Regulation Potential of Green Infrastructure The study provides direction for reinforcing the natural ecosystem within urban areas to maintain their adaptive capacities and provide ecosystem services to the town by restoring existing natural waterbodies. River restoration and stormwater retention ponds in urban areas will play an important role in the conservation of biodiversity and prevent landscape degradation. Here the aim of ecohydrology is not only conserving river habitat structure, but also to reach a balance between spatial and economic development and introducing nature. As Sundargarh is a moderately urbanised area, the biotic regulation of ecohydrological processes is stronger than bigger cities. This has practical feasibility for nature-based solution implementation. Suitable environmental conditions for water and vegetation entails for greater investment in alternative nature-based solution. Urban ecological systems with stronger biotical control have greater potential for nature-based approaches and they mostly are supportive of nature. Therefore, it is suggested to adopt alternative nature-based techniques involving the blue green infrastructure.

Urban drainage system is to aim at both flood control and pollution control. This alternative urban stormwater management approach provides methods that allow to control at source and handle the quality and quantity of the runoff at local level or nearby the source (decentralized technologies) and enable social and amenity perspectives to be incorporated into stormwater management approaches. The location of water bodies near to a drainage discharge point to the river Ib is shown in Figure 3 and the morphology details with the waterbodies is shown in Figure 4. Wastewater will flow to the first pond which is considered as converted wetland (Figure 5), through the filter material usually sand or gravel, and planted with vegetation tolerant of saturated conditions. The treatment can be carried out by chemical, physical and biological processes. It will mimic natural hydrological processes and will use natural elements such as soil and plants to turn rainfall into a resource

instead of a waste. From the converted wetland the water will flow to the water body (2), and the outlet of the natural water body (3) will be discharged to the river in the North (Figure 6.). The last water body will receive cleaner water and can provide recreational benefits along with contributing towards enhancement of the environmental quality of the city.



**Figure 3. Identified neighbourhood for the Blue Green Infrastructure proposal**



**Figure 4. Surrounding morphology of the existing location**



**Figure 5. Drain water flow to the converted wetland**



**Figure 6. Nature based proposal with the existing Blue Green Infrastructure**

## Conclusion

Close to nature practices can help to address hydrological issues in urban areas by implementing nature-based solutions. Despite of the recognised benefits and functions, the use of nature-based solutions remains marginal and grey infrastructure and technology-driven solutions continue to dominate urban development. In order to shift this dominance, new planning approaches with Urban Green Infrastructure are needed for the development, implementation and mainstreaming of nature-based solutions.

# Monuments of Power, Shadows of the People : Urban Development and the Forgotten Proletariat

**Dr. Deepashree Choudhury**

Professor, School of architecture and Planning,  
Apeejay Institute of Technology, Greater Noida

The proletariat, or working class, is frequently marginalized in the dynamic fabric of urban growth. Planning and policy decisions sometimes neglect the very people that create and maintain these urban centers as cities grow and modernize.

## **The Rise of Gentrification and Displacement**

In today's cities, the most common way urban change manifests is gentrification. Although it revitalises the economy, it frequently comes at the expense of long-standing working-class neighbourhoods. Property values rise as wealthy residents move in, raising rents and living expenses beyond the means of many original residents (Watt & Morris, 2024). In addition to uprooting families, this approach weakens the social and cultural ties that formerly characterised these communities. For example, redevelopment initiatives have turned Mumbai's Girgaon, which was formerly a bustling centre for mill workers, into affluent residential and commercial areas. Thousands of low-income households have been displaced as a result of this change, upsetting their social networks and way of life (Chatterjee & Parthasarathy).

## **Urban Political Ecology: A Lens into Inequality**

Urban Political Ecology (UPE) provides information about how urban settings are shaped by socio-political forces. It highlights how power systems that frequently marginalise the working class have an impact on environmental and urban planning decisions, making them anything but neutral. UPE criticises how urban growth can disproportionately impact lower-income areas by creating unequal access to resources, green spaces, and basic services (Gandy, 2021).

## **Insights from David Harvey's Social Justice and the City**

*Social Justice and the City*, David Harvey's groundbreaking book, offers a critical framework for comprehending the structural factors that influence urban environments. Harvey contends that capitalist processes of production are intricately linked to urban planning and development, frequently resulting in spatial inequities that disadvantage the working class. He argues for a Marxist perspective to solve

---

these issues, emphasizing that geography cannot remain impartial in the face of urban poverty and related evils (Harvey, 2003).

## The Erosion of Working-Class Spaces

In the past, working-class neighborhoods served as centers of culture, resistance, and community in addition to being places to live. However, business interests are frequently given precedence over community concerns in contemporary urban planning. These communities have become fragmented as a result of this change, making it difficult for the working class to preserve their cultural identities and social relationships. A great transportation network and socioeconomic rebalancing were the goals of the "Grand Paris" plan in Paris. But it unintentionally accelerated gentrification, displacing long-term, impoverished inhabitants in favor of affluent newcomers (Tonon, 2024).

## Consumption of Public Spaces for Political Symbolism: The Case of Central Vista Redevelopment



**Figure 1: Central Vista, Delhi**  
(ICOMOS INDIA, 2021)

The Central Vista renovation Project in New Delhi is a remarkable illustration of how urban renovation may support political narratives. The construction of a new Parliament building, new mansions for the Prime Minister and Vice President, and the conversion of Rajpath into Kartavya Path are all part of this ambitious initiative to revitalize India's central administrative center. Critics contend that the initiative represents a move towards centralized control and the rewriting of national identity to conform to contemporary political beliefs, despite the government's presentation of it as a step towards upgrading administrative infrastructure. For example, the

renaming of Rajpath to Kartavya Path is perceived as an effort to give the area a sense of responsibility and patriotism, thereby downplaying its democratic and historical significance (The Guardian, 2023).



**Figure 2 Central Vista, Delhi, Plan.** (ICOMOS INDIA, 2021)

Concerns over priority and inclusivity have also been highlighted by the project's implementation during the COVID-19 pandemic, which involved significant financial resources being allotted during a public health emergency. Additionally, public areas that have historically been used for protest and leisure have been moved as a result of the reconstruction, which has reduced opportunities for public participation and expression (ICOMOS INDIA, 2021).

## **Towards Inclusive Urban Development**

In order to overcome these obstacles, urban development must be rethought with the needs of the working class at its center. Policies ought to prioritize:

- **Affordable Housing:** Making certain that housing options available to people of all income levels are a part of redevelopment initiatives.
- **Community Engagement:** Including locals in planning choices to represent their actual needs.
- **Preservation of Cultural Spaces:** defending institutions and sites that are important to working-class communities' culture.
- **Transparent Governance:** Putting urban projects into action while consulting the public to make sure they benefit the general public rather than just political objectives (Das & Dahiya, 2020).

Cities can become places where all citizens, regardless of socioeconomic background, have the chance to prosper by embracing an inclusive approach.

---

## **References**

- Chatterjee, D., & Parthasarathy, D. (n.d.). Gentrification and Rising Urban Aspirations in the Inner City: Redefining Urbanism in Mumbai. In *Sustainable Urbanization in India* (pp. 239-255). London: Springer Nature. doi:10.1007/978-981-10-4932-3\_13
- Das, A. K., & Dahiya, B. (2020). Towards Inclusive Urban Governance and Planning: Emerging Trends and Future Trajectories. In *New Urban Agenda in Asia-Pacific: Governance for Sustainable and Inclusive Cities* (pp. 353-384). Singapore: Springer Nature Singapore Pte Ltd.
- Gandy, M. (2021). Urban political ecology: a critical reconfiguration. *Progress in Human Geography*, 46(1), 21-43. doi:https://doi.org/10.1177/03091325211040553
- Harvey, D. (2003). The right to the city. *International Journal of Urban and Regional Research*, 27(4), 939-941. doi:https://doi.org/10.1111/j.0309-1317.2003.00492.x
- ICOMOS INDIA. (2021). Central Vista Heritage Resource Concerns and Intervention Parameters. Delhi: ICOMOS INDIA.
- Tonon, G. H. (2024). *Urban Inequalities, A Multidimensional and International Perspective*. London: Springer Nature.
- Watt, P., & Morris, A. (2024). Special Feature: Putting urban displacement in its place. *City*, 28(1-2), 161-188. doi:https://doi.org/10.1080/13604813.2024.2315883

# Femina Naturae : Celebrating the Feminine in Nature Through Art

**Ar. Sanghamitra Rath**  
IIA Odisha Chapter

## Introduction :

In our busy, digitally aligned world, we often forget the profound connection between humanity and nature. Femina Naturae is a collection of paintings from my art journey which tries to depict this harmony and celebrate the feminine force which resonates within the natural world. The feminine principle which is associated with resilience, nurturing, intuition as well as courage, compassion and creativity is deeply rooted in the nature's rhythm. Beauty and ferocity, empathy and strength of will co-exist.



a friend's terrace. Pink and green come together here to create a perfect symphony.

Nature's beauty awakens the soul

My artistic vision is to create works that resonate, inspire, and give joy – offering glimpses of the extraordinary within the ordinary, inviting viewers to explore their own connection with nature's beauty and feel the infinite possibilities of existence. This simple lotus is captured from



## Lush and Layered

This painting tries to capture the layered nuance of a tropical forest. This lush forest with its many textures evokes the childhood fantasy of the Phantom comics where the waterfall hides unimaginable treasures. Its rich detailing, whispered secrets, bids one to explore deeper.

*Ask yourself what makes you come alive, and then go and do that – Howard Thurman*

## The Feminine in Nature

Rooted in the earthy richness of our world, the feminine principle embodies the cycles of life, growth, and transformation. This section explores the intricate relationships between nature's forms, textures, and rhythms, revealing the beauty and strength that reside within.



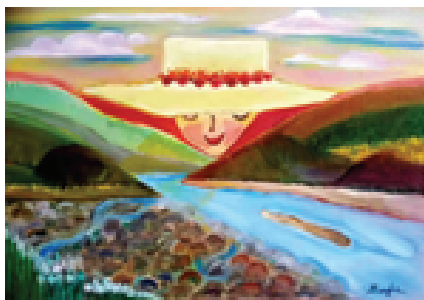
### Elegance

Earthy elegance combines with the feminine mystique in this painting. The blue and red make a warm and cool sacred circle that encapsulate the feminine spirit. The tendrils, blossoms and leaves escape and embrace. The golden tipped leaves and the delicate blooms evoke the richness of the earth, growth, renewal and the

cyclical nature of life.

### Nurturing

Nature and the feminine are intertwined as symbols of strength, beauty and nourishment. The curves of a perfectly turned flower, the gentle flow of a river, the resilience of trees, the perfect rhythm of a swaying tree aptly depict these. This painting tries to replicate these emotions.



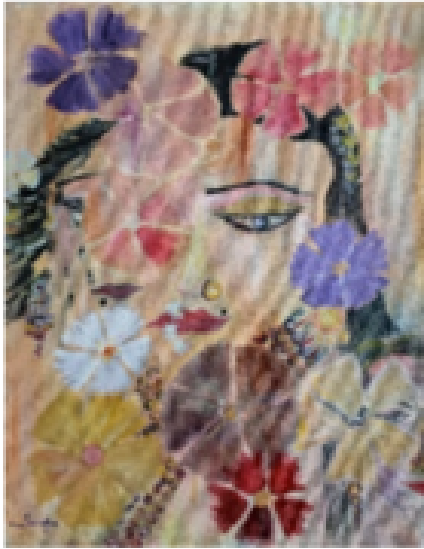
### Benevolence

In this whimsical painting, this gentle lady tries to provide shade on a fierce sunny day.

*Nature is a gentle mother, but also a fierce protector – Isabel Allende*

## Joy and Struggle

Life's journey weaves together moments of joy and struggle, each thread strengthening the tapestry of our existence. Here, vibrant colours and expressive forms capture the emotional depth of this dance, reflecting the resilience that defines women.



Moods and Memories

This is all about weathering life's storms with strength. The art shows the varying moods and emotions of women shrouded in a veil of hibiscus.

## Joy in Small Things

The unbounded joy of a rainbow or flowers blooming, reaching out. The painting is about exploration and infinite possibilities on opening the mind and soul to seek joy, knowledge, adventure on a voyage of self-discovery



Fiery Fusion

The painting depicts transformation, purification, passion when the light fades in a blazing glory. It is a coming together of warm and cool tones, the masculine and feminine, fire and water in a fiery dance.

*Joy is the infallible sign of the presence of art – Teillard de Chardin*

## Mystery and Surrealism

Beyond the veil of reality lies a realm of mystery and wonder, where dreams and imagination entwine. Women can navigate into faraway surreal landscapes while performing daily chores and mundane tasks

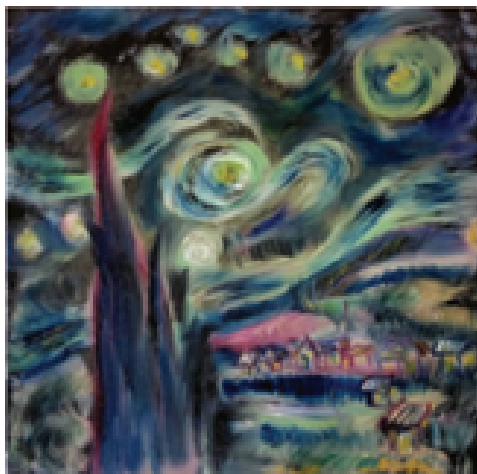
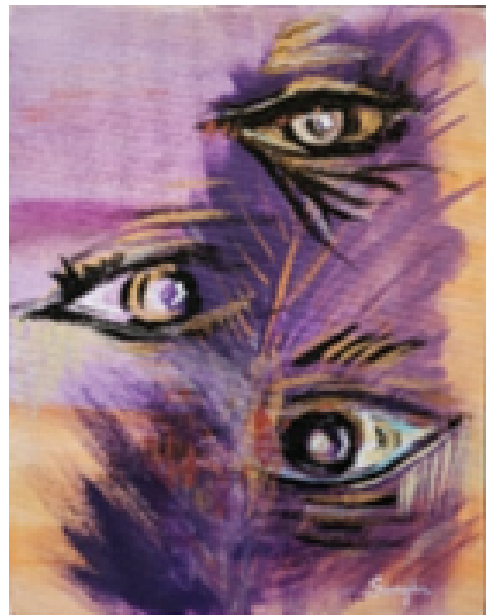


Silence of the Mountains

Mystery and magic under the moon  
This deco painting depicts the mountains, as a quiet stream slows by and the moonlight shines on golden fields in the quiet night.

### Big Brother

Where reality and fantasy blur. This painting tries to show a multi-dimensional perception, a deeper mystical knowledge. On another level, it depicts the reality of always being under the Watch.



A Starry Night

My depiction of this Van Gogh painting tries to capture the inherent mystery in it. Swirling clouds, stunning landscape seen through a master's eye.

*The unknown is the largest need of the human soul – Carl Jung*

## Conclusion



### Dreamscape

Order and Chaos Together Create a Whole Inspired by the beauty of the everyday and the surreal, my art navigates the tension between order and chaos, simplicity and complexity, all amply found in nature. This painting has been inspired by Van Gogh, a bit of Rousseau and the waves from Japanese wood block art, with Mt. Fuji as a backdrop.

Art is all about dreaming, reaching beyond what the eye can see and what the sense can feel.

### ***More about the paintings :***

#### **Mood and Emotion :**

The moods and emotions conveyed

- Nurturing
- Vulnerability
- Connection to nature
- Spiritual awakening

#### **Style :**

- Whimsical
- Mix of realism and impressionism

#### **Medium:**

- Acrylic and Oil
- Digital (Forest Nymph)

*The soul should always stand ajar ready to welcome the ecstatic experience – Emily Dickinson*

***I Walk  
I Look  
I See  
I Stop  
I Photograph***

*- Leon Levinstein*





*“ From Shiva’s  
Third Eye ”*



*Mukteswar Temple, Bhubaneswar*



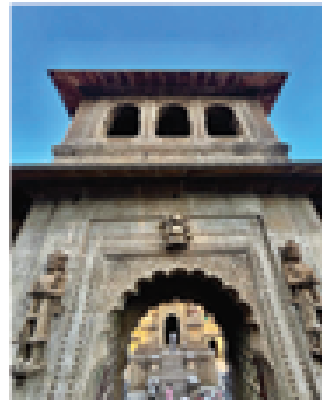
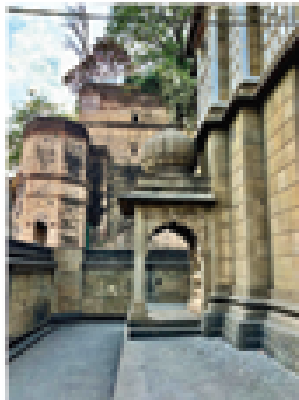
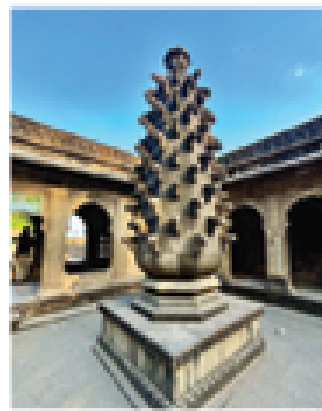
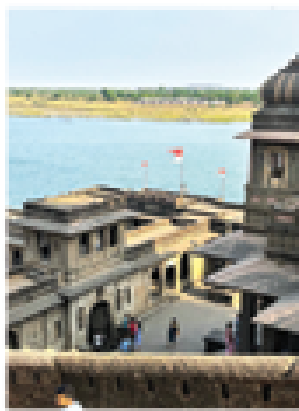
*Rajarani Temple, Bhubaneswar*

*Mukteswar Temple, Bhubaneswar*



***Mandira Malini Bhubaneswar***

*Photographs contributed by  
Ar. Shiva Prasad Rath*



Plethora of  
Monuments of  
Maheswar....  
by  
Ar. Suvaj Mohanty



# ***Fine Lines***





Pencil Art by **Ar. Anshuman Mishra**

# *Architect's Work*



# artifex

designstudio

Architecture | Interiors | Landscaping | PMC | Turnkey Projects

ODISHA - BIHAR - HYDERABAD

## Our Founders

**Founded by Ar. Bhakti Prasad Mahapatra and Ar. Rajat Jaiswal, Artifex design studio was created with the goal to provide clients with the best architectural and interior design and has since focused to strike a balance between aesthetics and functionality in the projects creating a balanced and neatly choreographed design details that cater to the client's needs.**

Artifex Design Studio was formed in 2015 with the goal of providing clients with quality products and secure, hassle free construction services along with focus on larger issues like impact in the environment and social responsibilities using the firm's combined experience and technical expertise.

The firm's awareness of being associated with the construction sector has resulted in the constant effort to upgrade to better construction techniques through adapting sustainable & eco-friendly construction methods, proper training of staff and responsible association & collaboration.

The firm undertakes a wide variety of building and construction work from small one of residential jobs, to home builds to large commercial or industrial projects.



# artifex

designstudio

Architecture | Interiors | Landscaping | PMC | Turnkey Projects

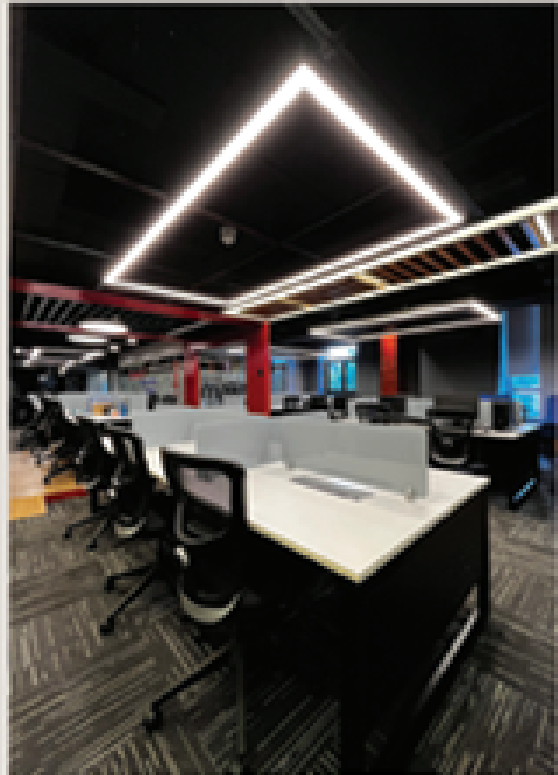
ODISHA - BIHAR - HYDERABAD

## INTERIORS

Interior Design



**E SQUARE**  
Office in Bhubaneswar, Odisha



**GOEL PLY HOUSE**  
Show Room in Bhubaneswar,  
Odisha

# artifex

designstudio

Architecture | Interiors | Landscaping | PMC | Turnkey Projects

ODISHA • BIHAR • HYDERABAD

## INTERIORS

Interior Design



# artifex

designstudio

Architecture | Interiors | Landscaping | PMC | Turnkey Projects

ODISHA - BIHAR - HYDERABAD

## ARCHITECTURE

Architecture Design

### GRAND PALACE

Banquet Hall in Bhubaneswar,  
Odisha



### KAKARINA COMPLEX

Commercial Building in  
Muzaffarpur, Bihar



### R J TOWER

Commercial Building in  
Muzaffarpur, Bihar



# artifex

designstudio

Architecture | Interiors | Landscaping | PMC | Turnkey Projects

ODISHA - BIHAR - HYDERABAD

## ARCHITECTURE

Architecture Design



19

© 2023 ARTIFEX DESIGNSTUDIO  
HYDERABAD, INDIA





Front Cover Page Contributed by **Dr. Deepashree Choudhury** and  
Rear Cover Page Art work contributed by **Ar. Debashreea Debabarni**